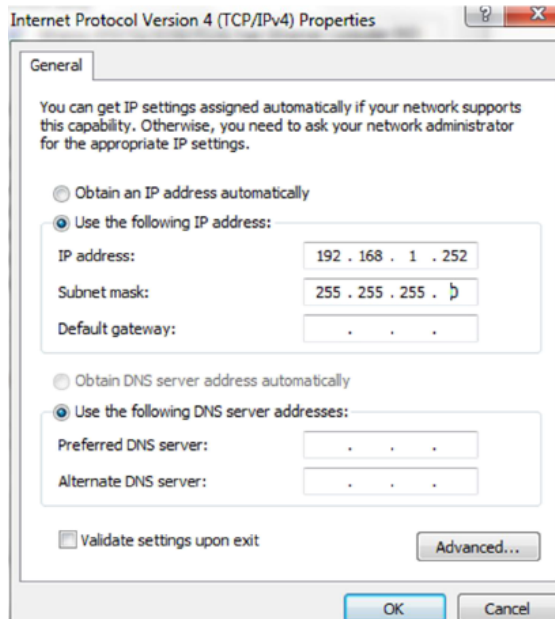
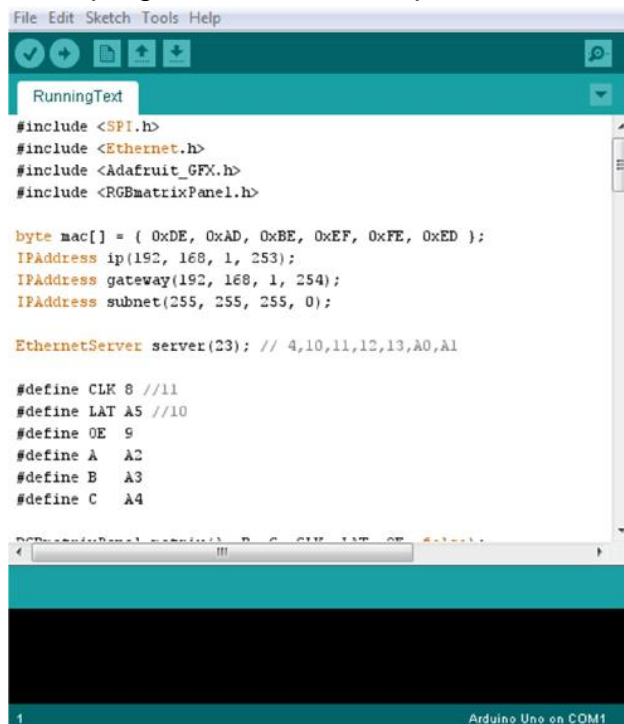


## Petunjuk Persiapan penggunaan aplikasi running teks

- a. Atur ip client yang kita gunakan



- b. Buka program arduino dan upload



- c. Sebelum upload ke arduino compile program dengan menekan tombol



Pada pojok kiri atas nomer 1

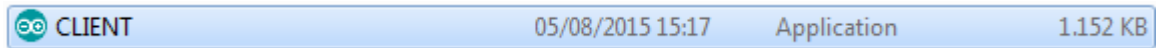
- d. Setelah program berhasil di compile upload program dengan mengklik



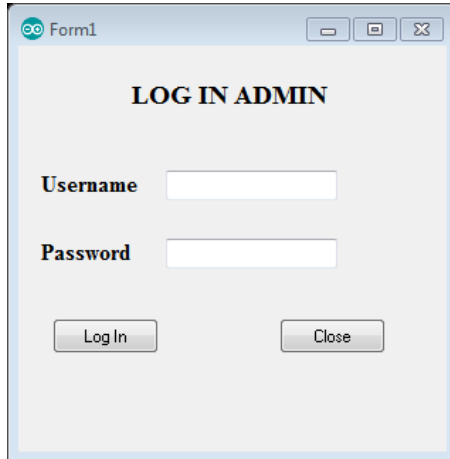
tombol yang terletak di pojok kanan atas nomer 2

## Petunjuk pengoprasian client

1. Buka aplikasi client seperti gambar dibawah ini :



2. Setelah di buka maka akan muncul seperti dibawah ini :

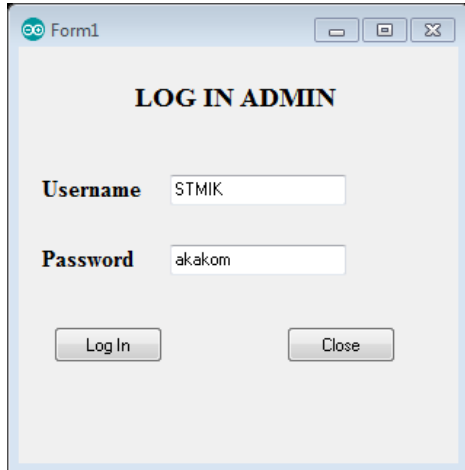
A screenshot of a Windows application window titled 'Form1'. The window has a light gray background and a title bar with standard Windows window controls (minimize, maximize, close). The main content area is titled 'LOG IN ADMIN' in bold black text. Below the title, there are two input fields: 'Username' and 'Password'. The 'Username' field is empty, and the 'Password' field is also empty. Below the input fields, there are two buttons: 'Log In' and 'Close'.

3. Isikan username dan password

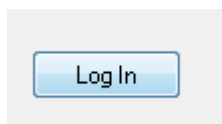
Username : STMIK

Password : akakom

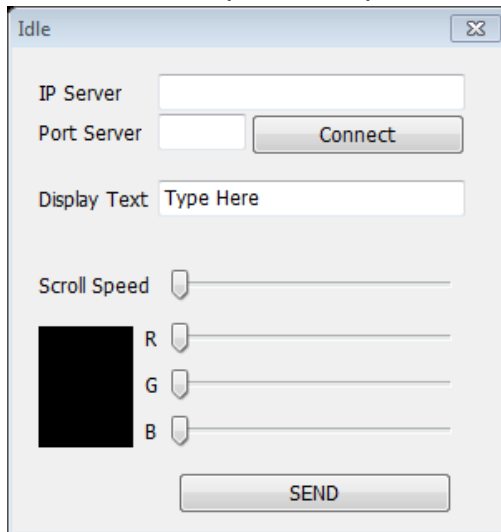
Seperti gambar dibawah ini:

A screenshot of the same 'Form1' window as in the previous image. The 'Username' field now contains the text 'STMIK' and the 'Password' field contains the text 'akakom'. The 'Log In' and 'Close' buttons are still present at the bottom.

4. Setelah mengisi password maka klik button login



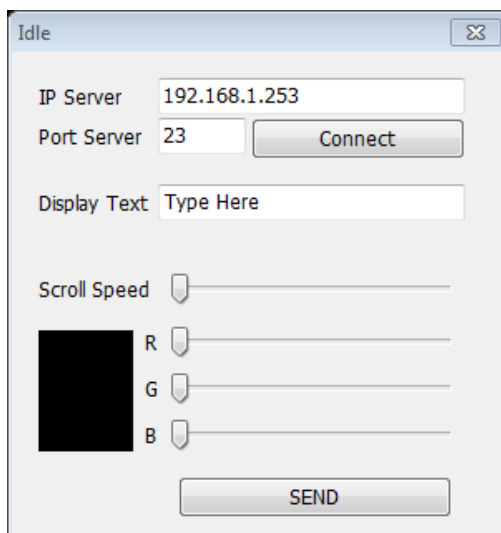
5. Maka akan tampil form input running teks seperti gambar dibawah ini:



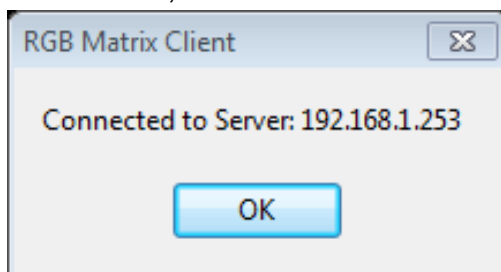
6. Isikan ip dan port sesuai server arduino yaitu:

Ip : 192.168.1.253

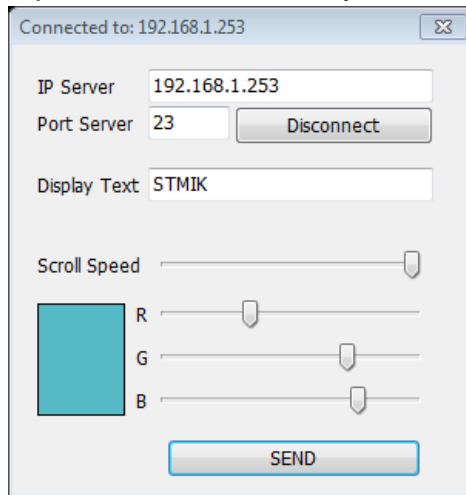
Port : 23



7. Setelah di isi klik button connect maka akan muncul gambar seperti dibawah ini, menandakan sudah terhubung dengan server



8. Inputkan kata, atur delay, atur warna sesuai keinginan kita.



9. Setelah diatur klik button send



10. Maka tampilan display akan seperti dibawah ini

